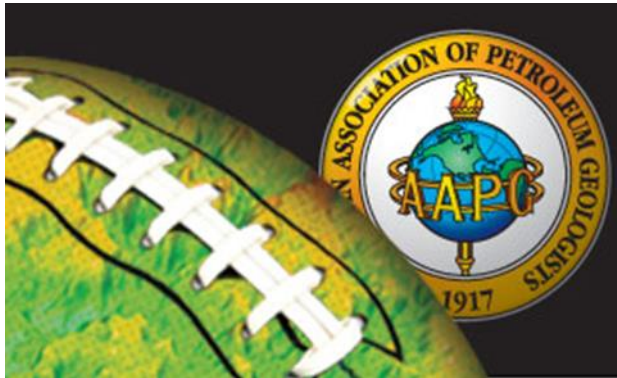


INVESTMENT OPPORTUNITIES IN E&P ACTIVITIES IN PERU

Elmer Martinez G.
Exploration Management

MAY 2013

PERÚ: UNDEREXPLORED COUNTRY



Peru is located within one of the most prolific hydrocarbon trends in South America: “The Sub Andean Megatrend”

- 1 Light oil discoveries in Western Marañón Basin
- 2 Heavy oil discoveries in Eastern Marañón Basin
- 3 Light oil and natural gas discoveries in Ucayali Basin
- 4 Three Giant natural gas and condensate fields discovered in Camisea and adjacent block . Five super big discoveries in other two blocks adjacent to Camisea.
- 5 Light oil and natural gas fields in Tumbes and Talara Basins.

Some fields have been producing crude oil for 140 years in these basins in the northwest coast.



MARAÑÓN BASIN

Cumulative 1,000 Million BO

Daily 25,000 BPD

TALARA BASIN

Cumulative 1,500 Million BO

Daily 40,000 BPD

31 Million CFD

UCAYALI BASIN

Cumulative 32 Million BO

201 Million BC

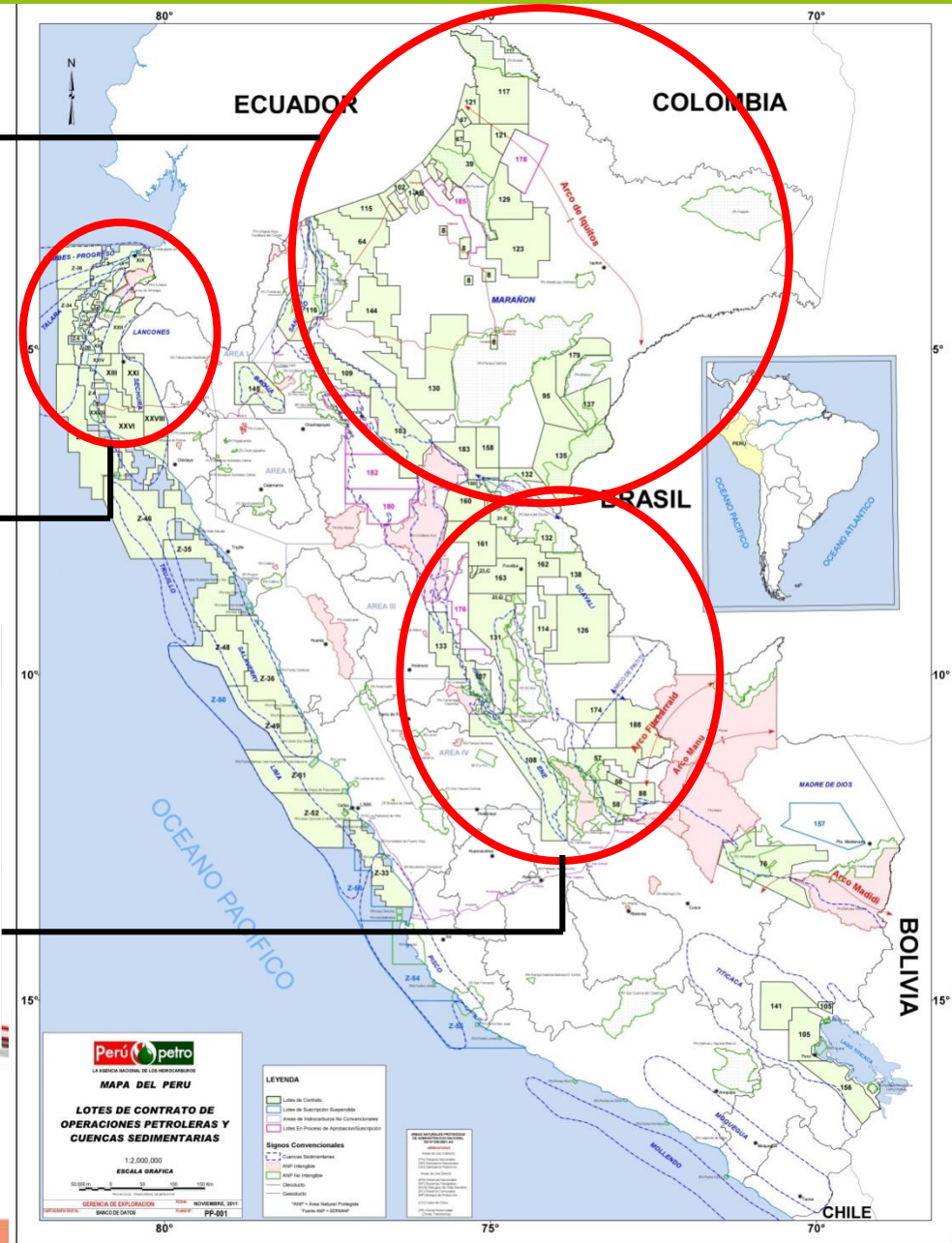
1.7 TCFG

Daily 370 BPD

105,500 BCD

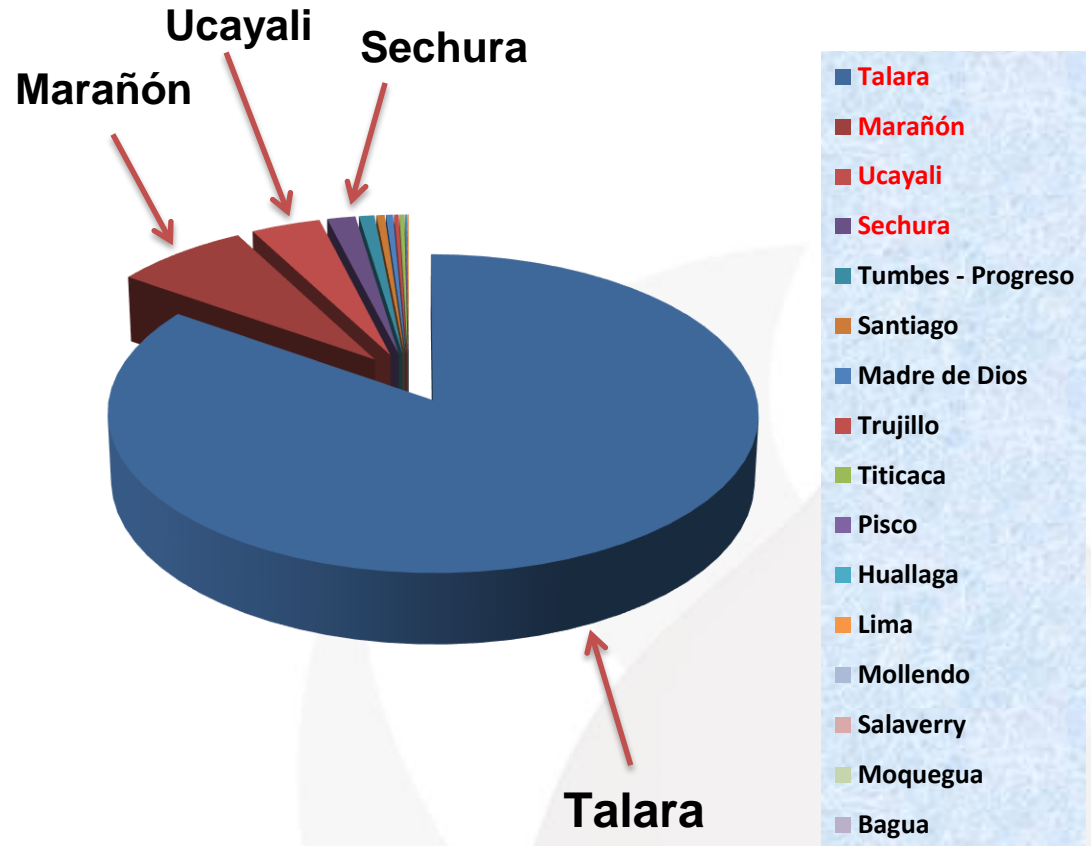
1,078 Million CFD

Camisea and adjacent block field are included in Ucayali basin.



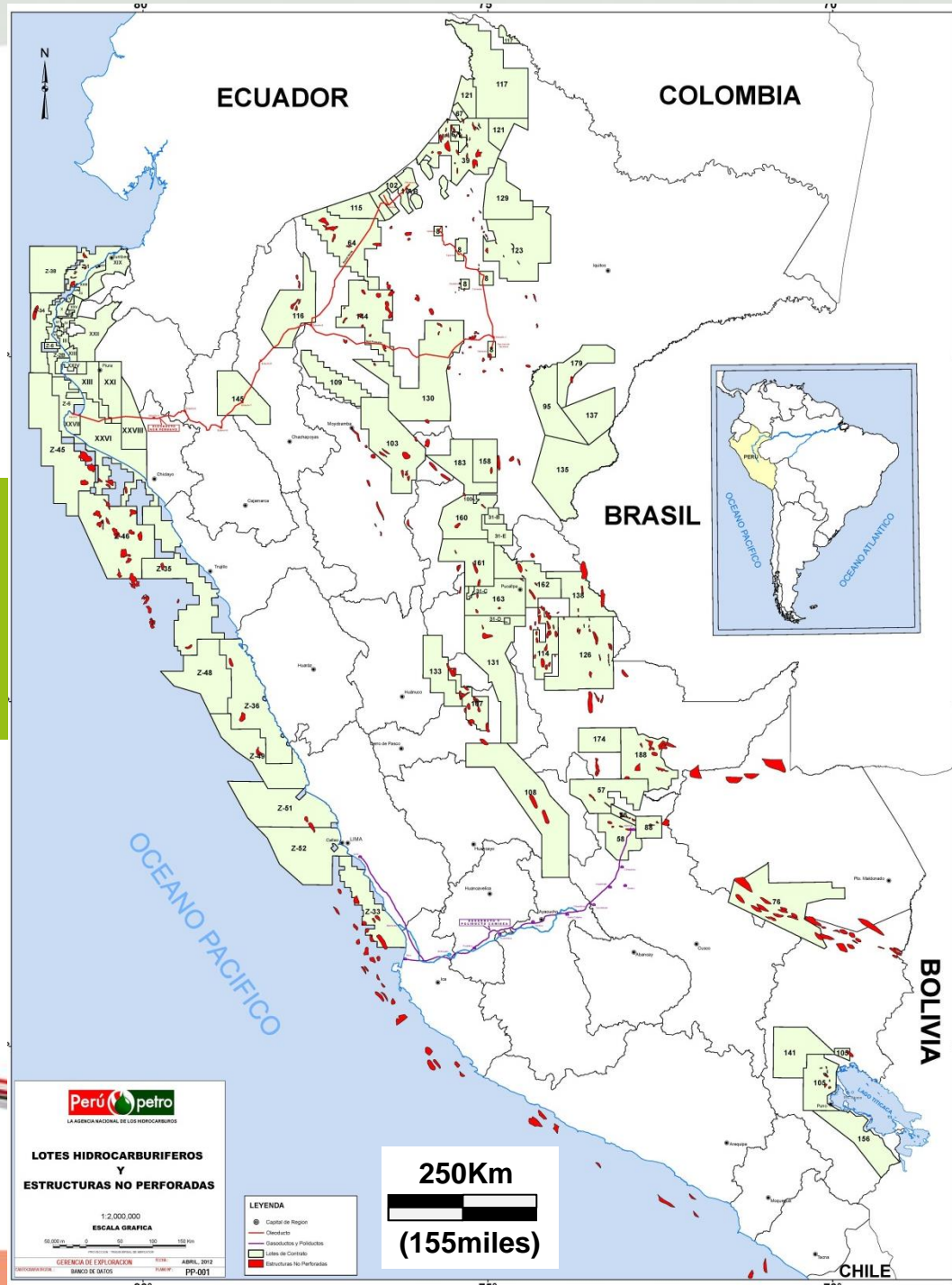
Distribution of Wildcats in 18 Basins

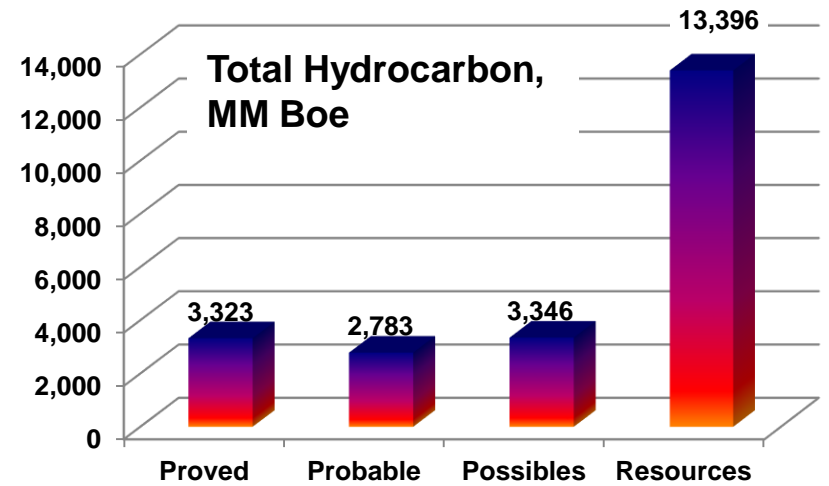
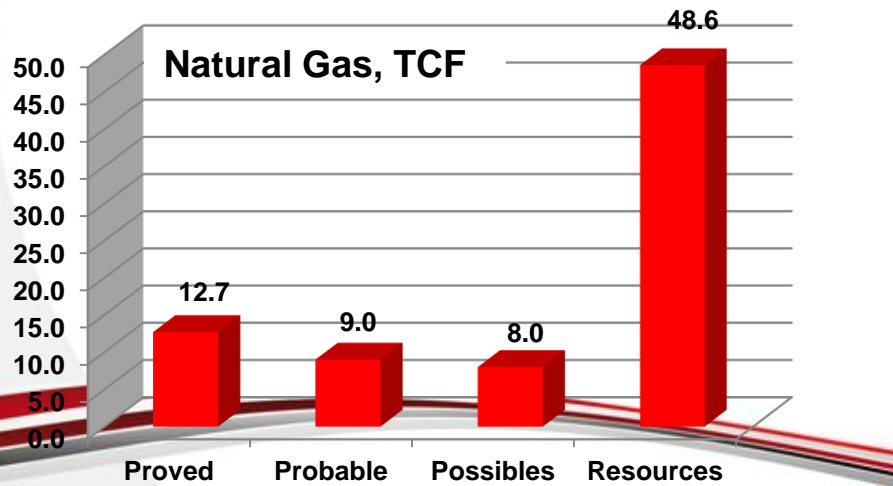
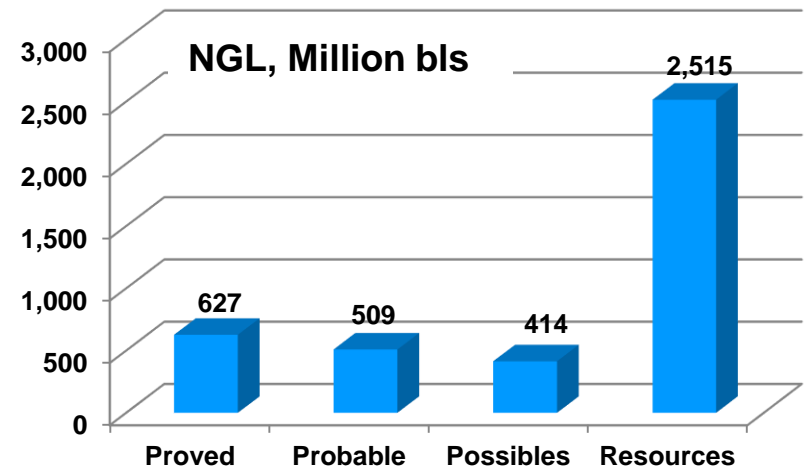
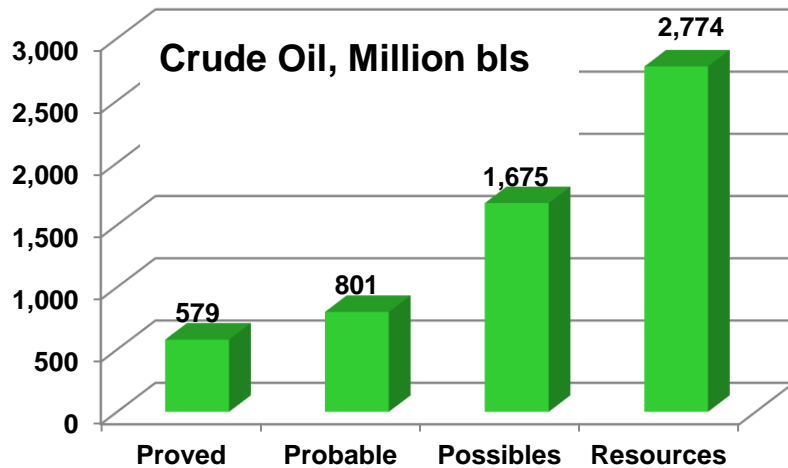
BASINS	Exploratory Wells	%
Talara	1,299	84.68
Marañón	115	7.50
Ucayali	59	3.85
Sechura	24	1.56
Tumbes - Progreso	13	0.85
Santiago	7	0.46
Madre de Dios	6	0.39
Trujillo	4	0.26
Titicaca	4	0.07
Pisco	1	0.07
Huallaga	1	0.00
Lima	0	0.00
Mollendo	0	0.00
Salaverry	0	0.00
Moquegua	0	0.00
Bagua	0	0.00
Ene	0	0.00
	1,533	100.00



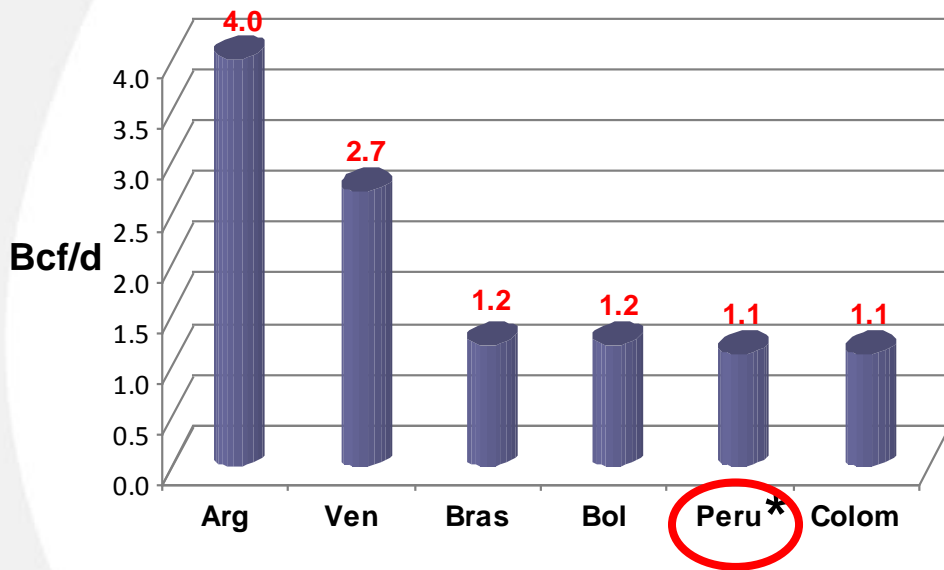
98% Wilcats: 4 basins

411 UN-DRILLED LEADS / PROSPECTS

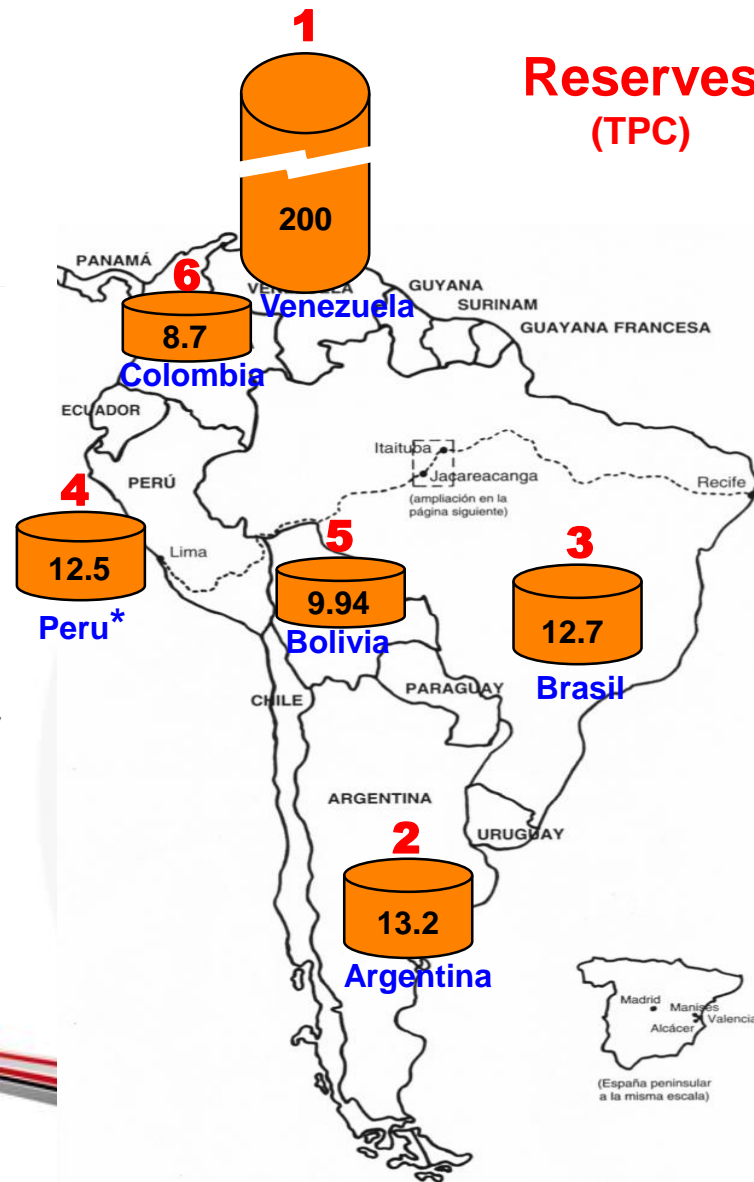




Production

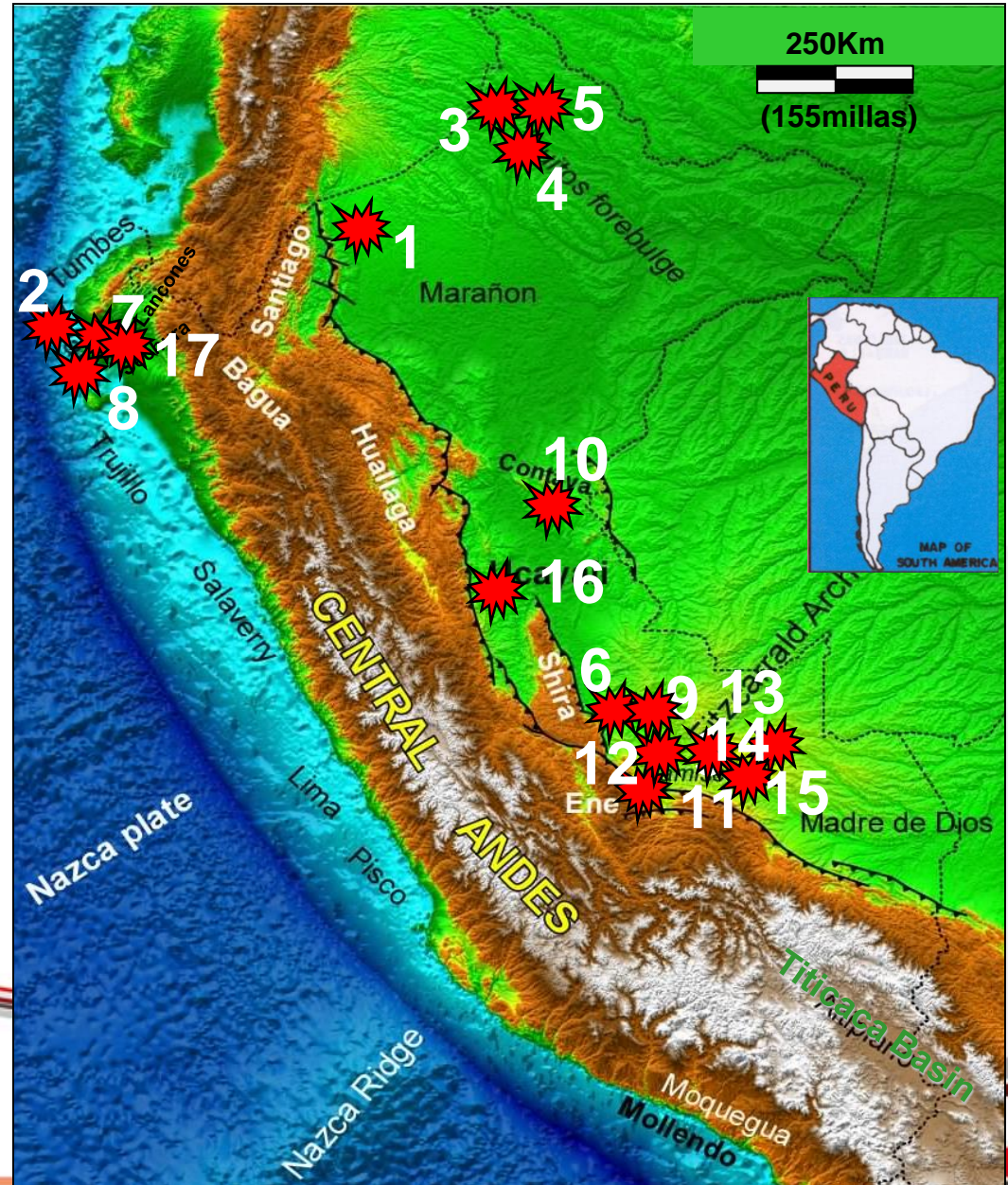


Reserves (TPC)

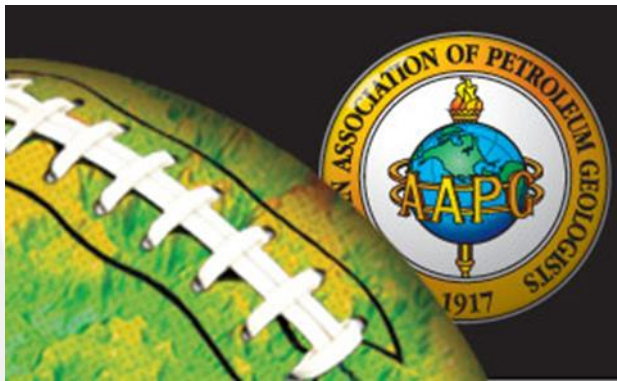


BASIN	YEAR	TYPE OF HC
1. Marañón	2005	LO
2. Talara	2005	LO
3. Marañón	2005	HO
4. Marañón	2006	HO
5. Marañón	2006	HO
6. Ucayali Sur	2007	GC
7. Talara	2007	LO
8. Talara	2008	Gas
9. Ucayali Sur	2005	GC
10. Ucayali Norte	2009	NCG
11. Ucayali Sur	2010	GC
12. Ucayali Sur	2011	GC
13. Ucayali Sur	2011	GC
14. Ucayali Sur	2012	GC
15. Ucayali Sur	2012	GC
16. Ucayali	2012	LO
17. Talara	2012	LO

TYPE OF HC	N°
LO – Light Oil	5
HO – Heavy Oil	3
GC - Gas / Condensates	8
NCG - None Conventional Gas	1

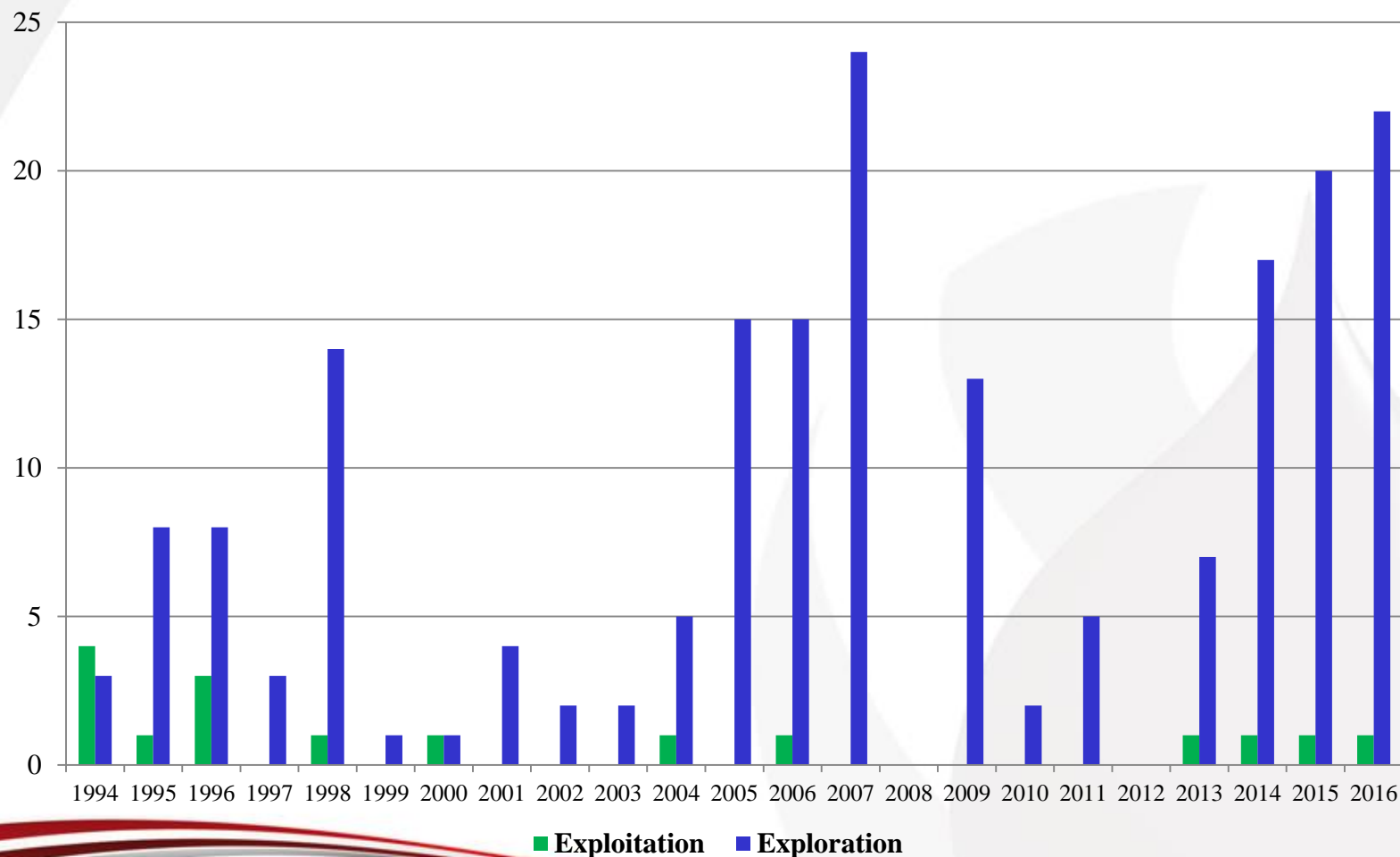


PERUPETRO Statistics



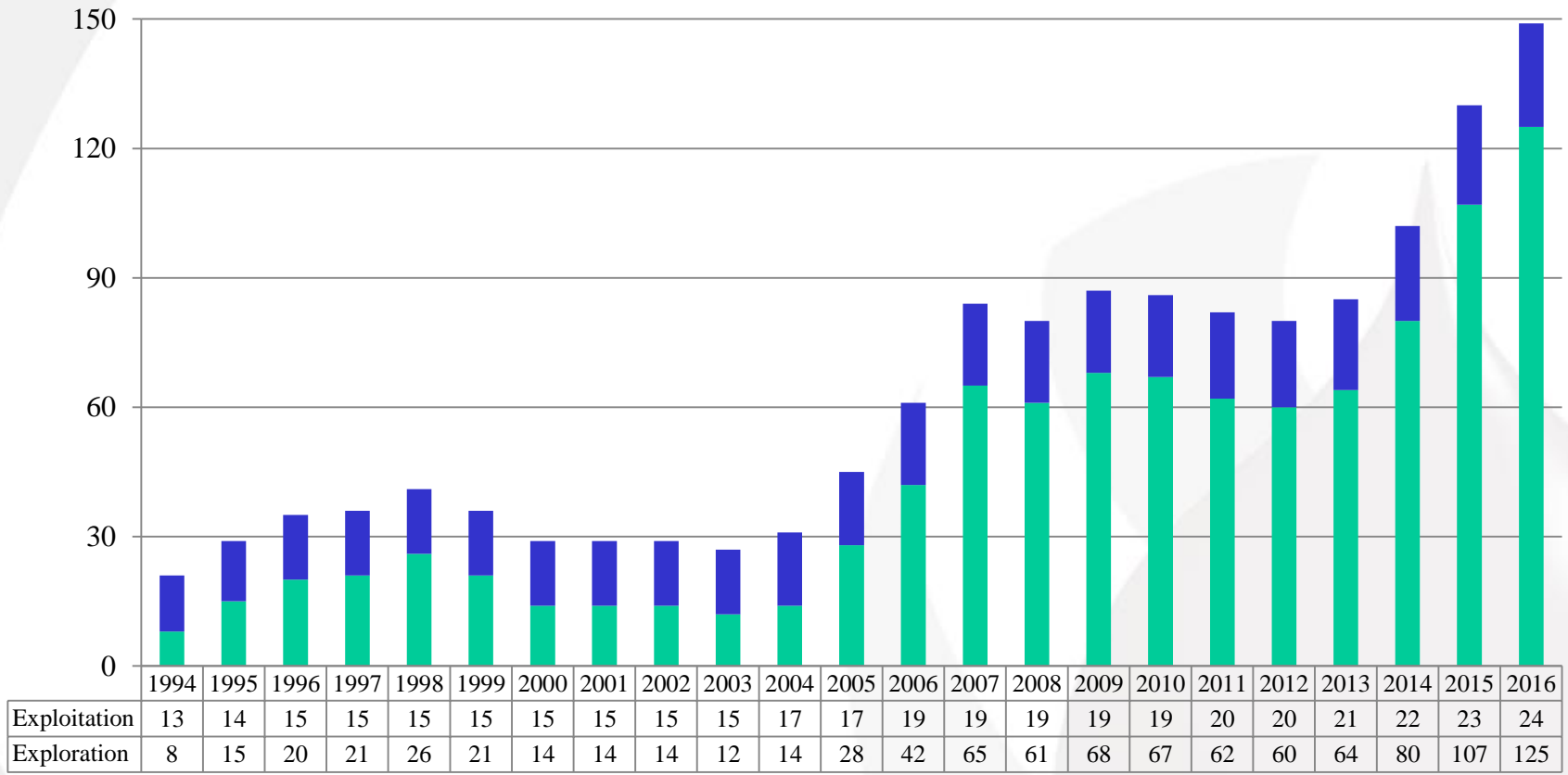
Annual new E & P Contracts 1994-2012

Projection 2013 - 2016



E & P Contracts in force 1994 – 2012

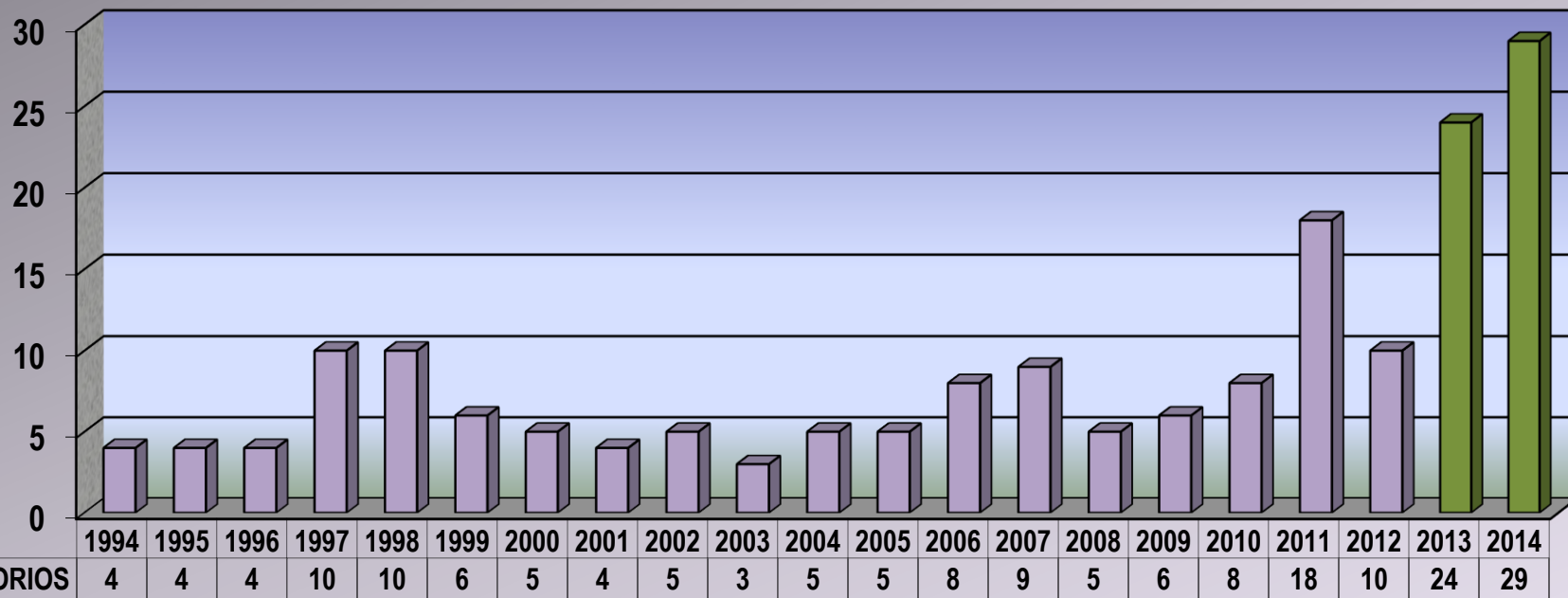
Projection 2013 - 2016



■ Exploration ■ Exploitation

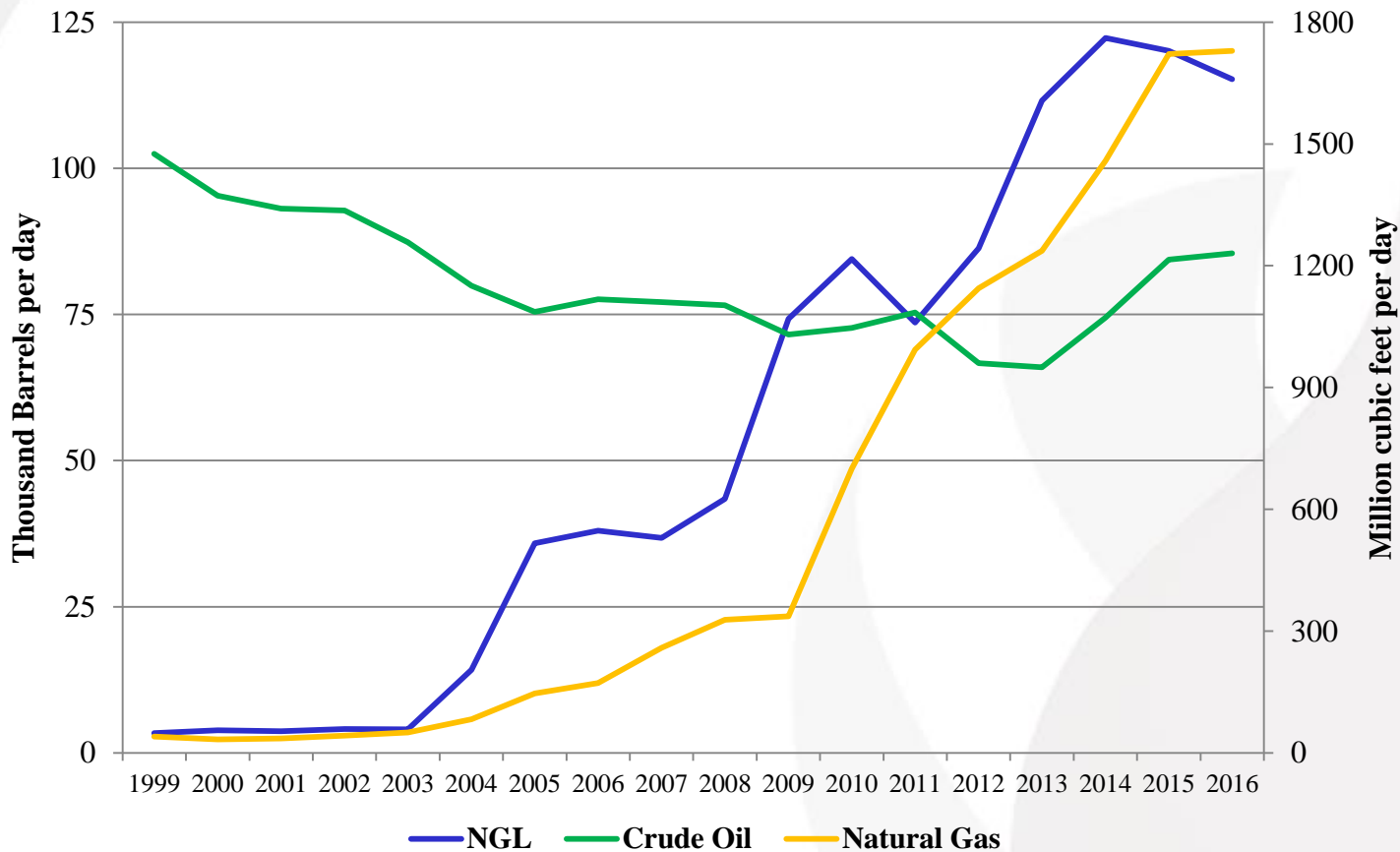
Annual Wildcats Drilled 1994 –2012

Projection 2013 - 2014

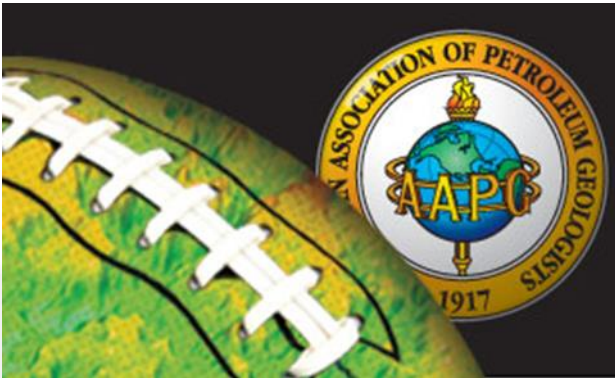


Hydrocarbon Production 1999 - 2012

Projection 2013 - 2016

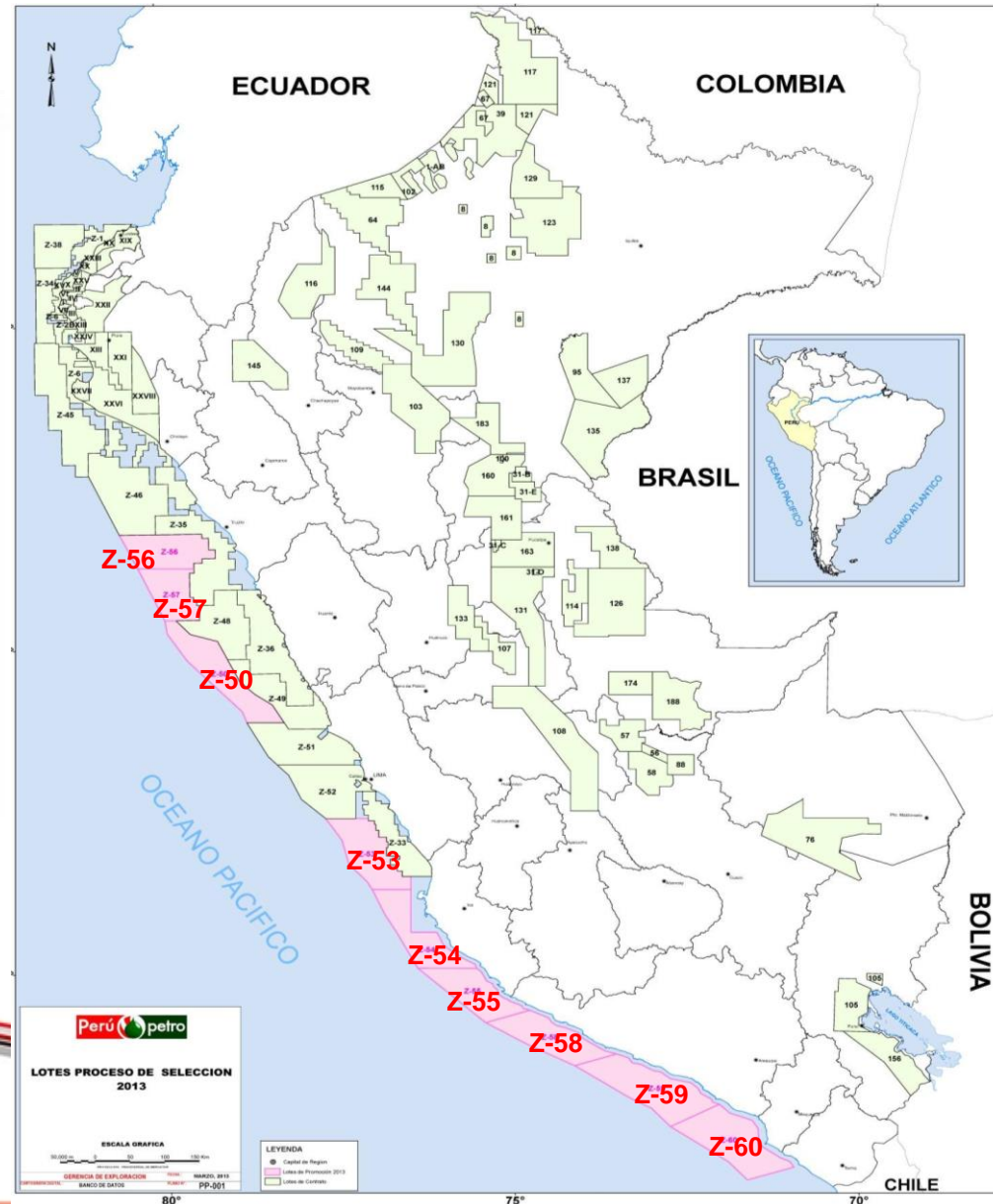


2013 BIDDING ROUND – NINE BLOCKS – OFFSHORE

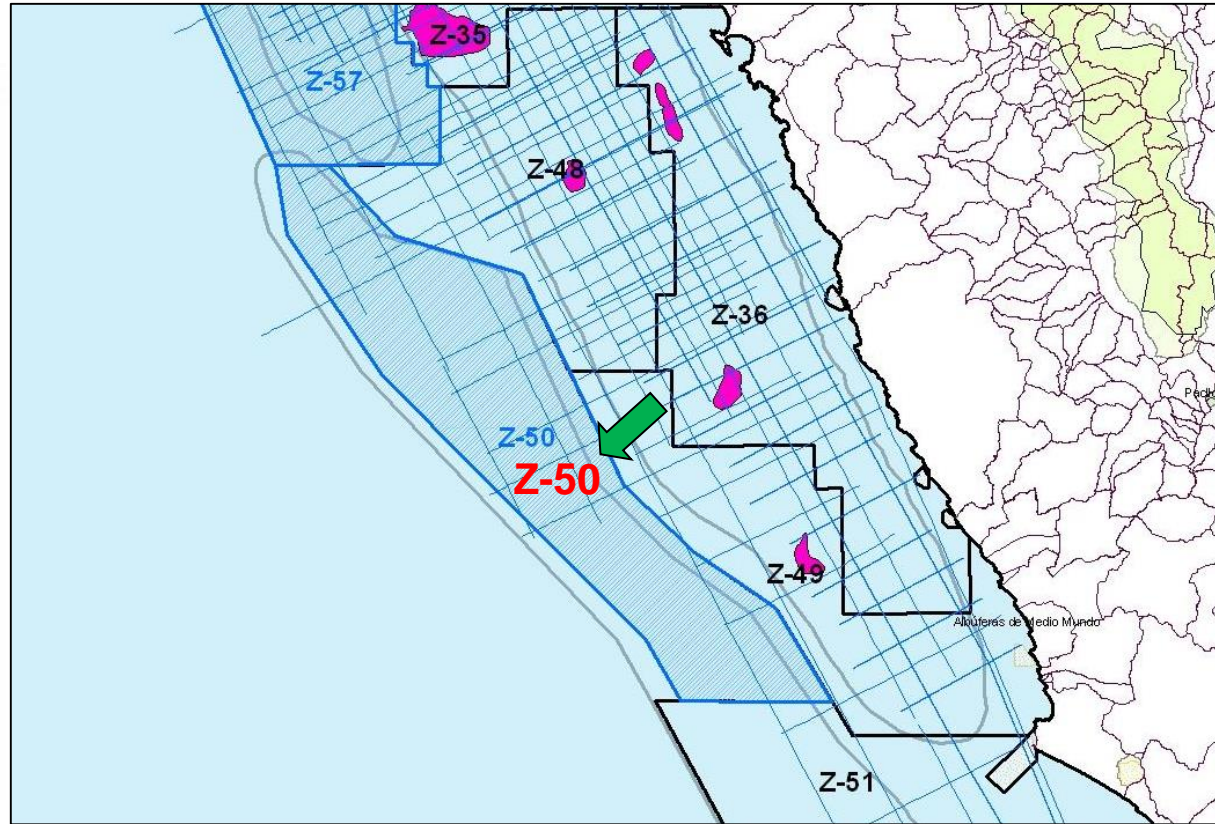


Nine Blocks for hydrocarbons exploration and exploitation activities in 4 basins

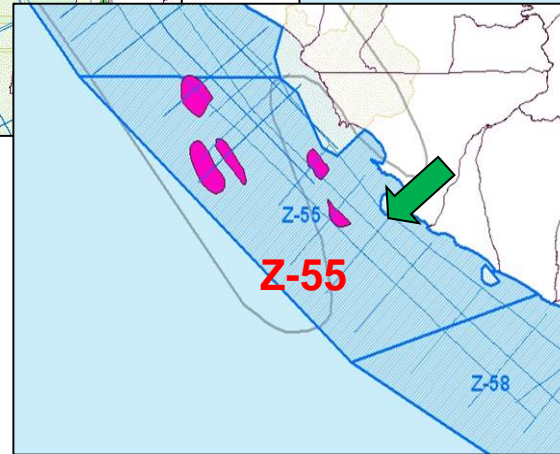
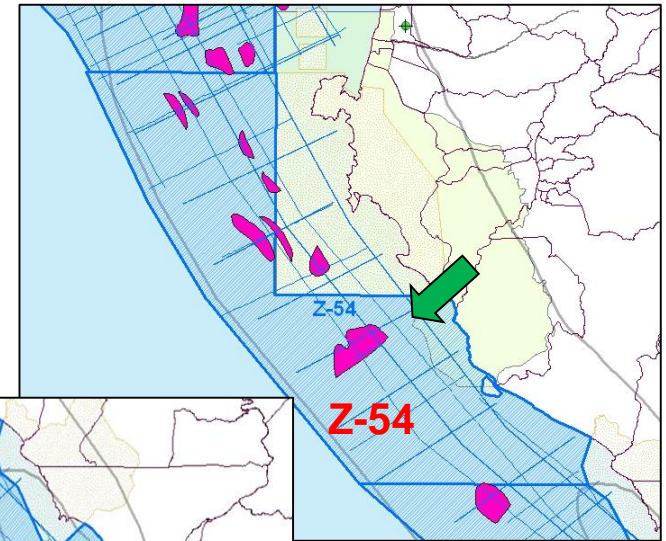
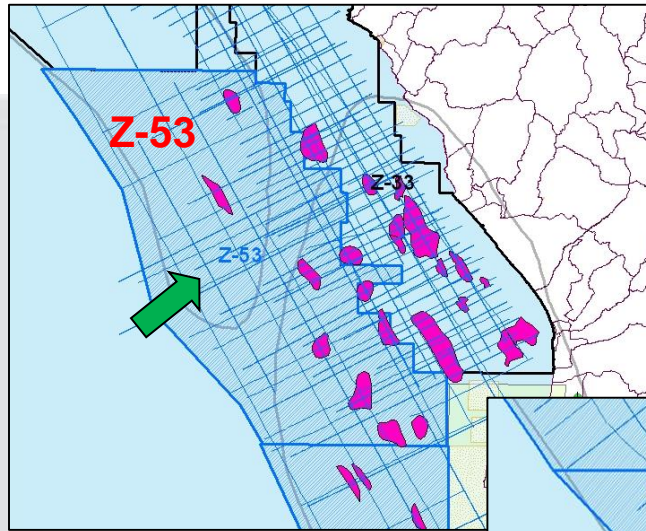
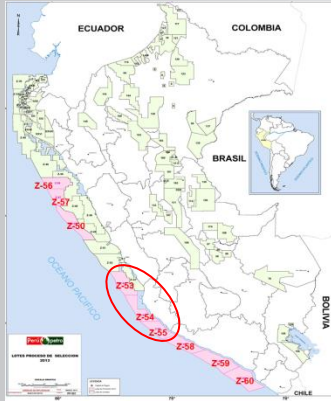
For further Information:
promotion@perupetro.com.pe



BLOCK Z – 50 LIMA BASIN



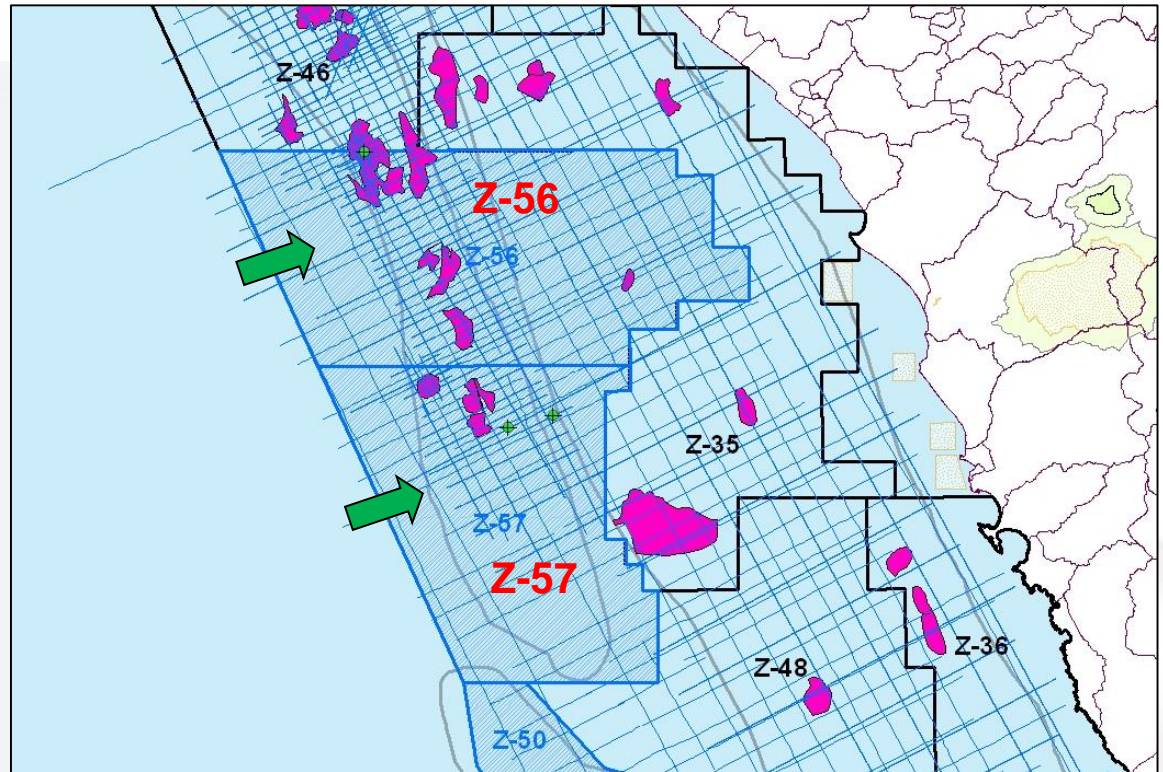
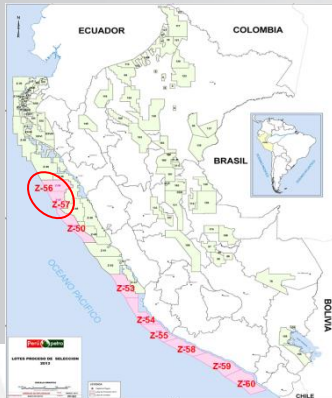
BLOCK	AREA (ha)	PREVIOUS STATUS	AVAILABLE INFORMATION	PROSPECTS / LEADS
Z-50	876,753	Available area	APPROX. 740 Km of 2D Seismic	



BLOCKS Z-53, Z-54, Z-55 LIMA PISCO BASIN

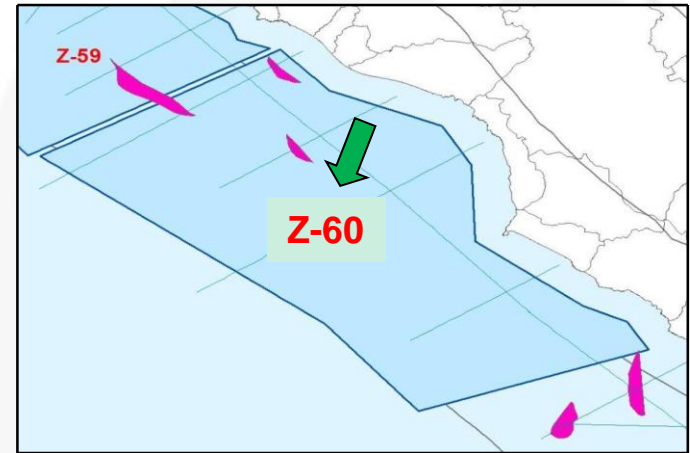
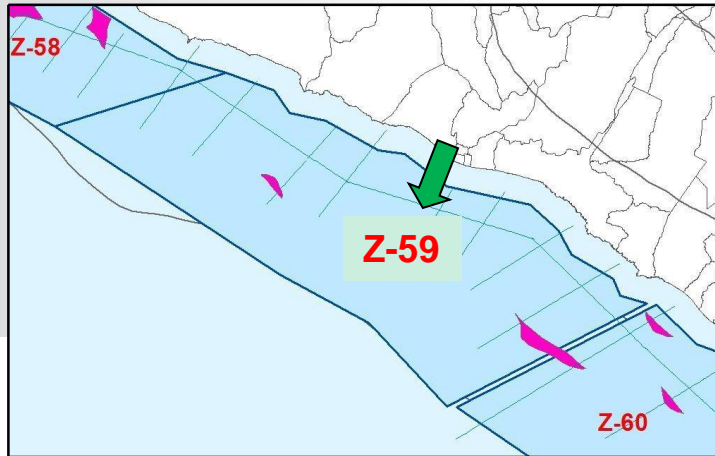
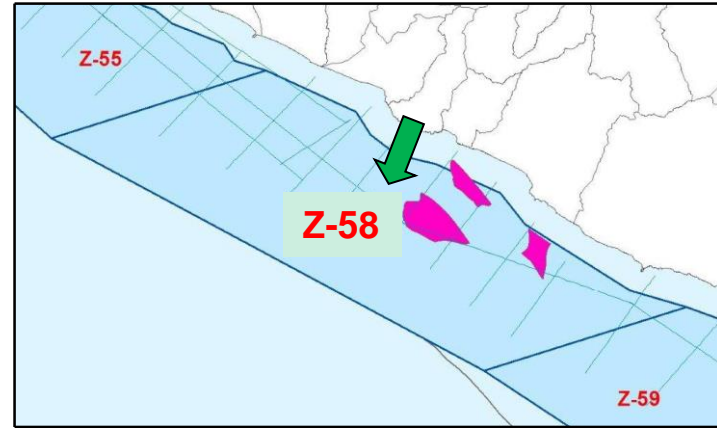
BLOCK	AREA (ha)	PREVIOUS STATUS	AVAILABLE INFORMATION	PROSPECTS / LEADS
Z-53	823,617	Bidding Round 2010	Approx. 2,493 Km of 2D Seismic	7 leads
Z-54	717,518	Bidding Round 2010	Approx. 856 Km of 2D Seismic	6 leads
Z-55	651,145	Bidding Round 2010	Approx. 515 Km of 2D Seismic	5 leads

BLOCKS Z-56 and Z-57 SALAVERRY TRUJILLO BASIN



BLOCK	AREA (ha)	PREVIOUS STATUS	AVAILABLE INFORMATION	PROSPECTS / LEADS
Z-56	716,294	Available area	Approx. 3,305 Km of 2D Seismic	6 leads
Z-57	578,859	Available area	Approx. 2,050 Km of 2D Seismic	4 leads

BLOCKS Z-58, Z-59, Z-60 MOLLENDO BASIN



BLOCK	AREA (ha)	PREVIOUS STATUS	AVAILABLE INFORMATION	PROSPECTS / LEADS
Z-58	699,161	Bidding Round 2008	Approx. 430 Km of 2D Seismic	3 leads
Z-59	1,040,005	Bidding Round 2008	Approx. 454 Km of 2D Seismic	2 leads
Z-60	997,172	Bidding Round 2008	Approx. 431 Km of 2D Seismic	2 leads

1. All seismic, well data, well logs and technical reports available

2. Available for download on request

3. No charge for Data and Reports



Inicio Mapa de Sitio Contáctenos Intranet

Perúpetro

¿Quiénes somos? Información Relevante Inversionista y Contratación Protección Ambiental Prensa Participación Ciudadana Oficinas Descentralizadas

Perú

>> English Perú, Lunes 25 de Marzo de 2013 Año de la Inversión para el Desarrollo Rural y la Seguridad Alimentaria

Información Técnica de Áreas Disponibles

CUENCAS:

- Salaverry - Trujillo
- Lima
- Lima - Pisco
- Mollendo

NUEVE LOTES OFFSHORE

COMUNIDADES Y MEDIO AMBIENTE

BANCO DE DATOS

PRÓXIMA LICITACIÓN PUBLICA INTERNACIONAL

>> Ver más

Enlaces Importantes

- Mapa de Lotes
- Canon y Sobrecanon
- Contratos Vigentes
- Informe Mensual
- Producción Diaria
- Transparencia

Sala de Prensa

PERUPETRO participó en APPEX 2013
PERÚ PROMOCIONÓ CUENCAS PARA EXPLORACIÓN DE HIDROCARBUROS EN REINO UNIDO
 PERUPETRO promocionó las cuencas peruanas con potencial para exploración de hidrocarburos durante su participación en el APPEX 2013 en Reino Unido, importante evento de la industria petrolera mundial.

[Leer Más >>](#)

Novedades

Diario Gestión
 11/03/2013
[Ver Más](#)

Repsol vendió activos de GNL a Shell por 6,653 millones de dólares - Diario Gestión
 26/02/2013
[Ver Más](#)

Boletín Electrónico

INFORMACIÓN EN LÍNEA

WTI 22/03/13	93.4	US\$/bl
Crudo Brent 22/03/13	106.2	US\$/bl
Prod. Petróleo 24/03/13	59.9	Mbl/d
Prod. Líquidos Gas Natural 24/03/13	108.1	Mbl/d
Prod. Gas 24/03/13	1,100.2	MMpcd

Ministerio de Energía y Minas

ProlInversion

Portal del ESTADO PERUANO

THANK YOU